

SIG-PACK



For high-speed carton packing with accurate counts and efficient operation.



HIGH-SPEED AUTOMATIC CARTON PACKER

The SIG-PACK is designed to streamline end-of-line operations with efficient and reliable carton packing.



ADVANTAGES

- ▶ **High-Speed Packing Performance** – Processes up to 160,000 blanks per hour in straight-line operation.
- ▶ **Flexible System Configurations** – Available as in-line or L-shape layouts to fit different production environments.
- ▶ **Accurate Box Counting** – Ensures consistent and reliable carton counts during packing.
- ▶ **Operator-Friendly Design** – Simple controls and accessible adjustments support efficient daily operation.
- ▶ **Broad Compatibility** – Works with most folder gluer brands for seamless integration.

APPLICATIONS

- ▶ High-volume folding carton production utilizing automated packing
- ▶ End-of-line automation for folder gluer systems
- ▶ Converters seeking efficient carton handling and packing
- ▶ Folding carton operations looking to reduce operator fatigue from manual packing

THE SIGNATURE DIFFERENCE

Every Signature Folder Gluer is built for long-term performance and crafted with the operator in mind. From durable construction to intuitive design, each model delivers exceptional ease of use and dependable accuracy. With versatile configurations and custom options tailored to your production needs, Signature machines are engineered to grow with your business – delivering reliability, precision, and flexibility run after run.

BASELINE FEATURES

1 Machine Control Integration

Allows the operator to control the folder gluer from packer with jog and stop options.

2 Quality Control Station

Ejects a small number of cartons for manual spot-checking of product quality.

3 Control Panel

Central operator interface for monitoring machine status and adjusting packer settings.

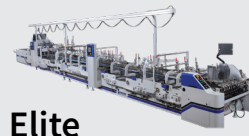
4 Computerized Make-Ready

Motorized positioning recalls job settings and enables adjustment of the carriers and shooter arm during operation.

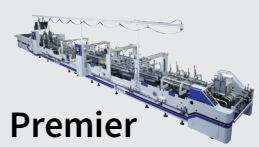
5 Buffer Zone

Section for cartons to accumulate to maintain consistent carton flow during the packing process.

PAIR YOUR SIG-PACK WITH



Elite



Premier



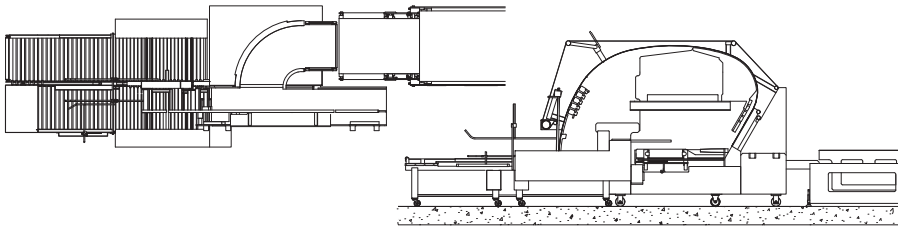
Access



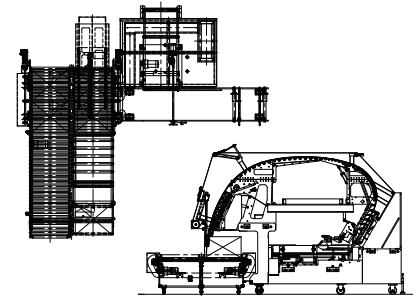
Compact

For Eagle & Albatross – contact AIM to evaluate carton size for use with Sig-Pack

CONFIGURATIONS



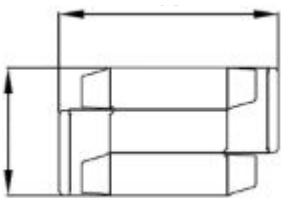
In-Line Type



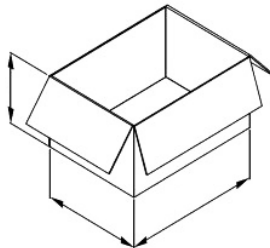
L-Shape Type

Optional pass-through conveyor.

SUPPORTED CARTON STYLES



2 OR 4 CREASE LINE



CONTAINERS
(WITH OR WITHOUT CLOSING FLAPS)



Scan QR code
for carton specs.

