



Durability, Versatility, Affordability

# SIG-SPOT



## FEATURES

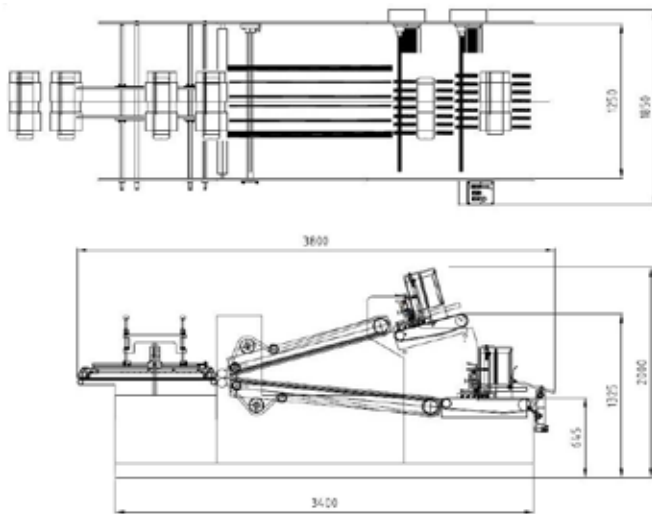
- Inlet spotter with capabilities to glue 2-part cartons
- Ergonomic design for blank loading ease; less operator fatigue
- Compatible with most folder gluers with simple "roll up and lock in" design
- Uniform pile height achieved with adjustable proximity switch
- Fully adjustable feed gates accommodate full range of blank sizes
- AC variable speed drive for speed adjustments

# SIGNATURE SIG-SPOT

No matter what you're searching for, Signature offers a unique line-up of converting equipment that delivers quality construction, updated technology, and competitive performance.

## Compatible Inlet Spotter

In response to today's increased demand for shelf-ready packaging like detergent boxes and displays, the Sig-Spot inlet spotter is designed for gluing 2-part reinforced cartons accurately and reliably. The sig-Spot is compatible with most folder gluer brands and is available for sale as an individual unit or as a supplemental option for a new Signature brand folder gluer. For precise registration of reinforcement inserts and exterior folding cartons, the Sig-Spot is a productive and profitable solution. Combine the Sig-Spot inlet spotter inline with the Signature Sig-Feed prefeeder for even higher productivity.



## MACHINE DIMENSIONS

Length	3,800 mm
Width	1,850 mm
Height	2,000 mm
Weight (net)	Approx. 2,000 kg
Working Width	235-1,100 mm
Connected Load	220V / 60 Hz-30-18 KVA
Annex Device	Hot melt device (220V/60Hz-30-30A)
Production Speed	Max 130 m/min
Effective Production Ability	12,000/hr
Max Production Ability	13,000/hr



### AIM USA

7725 South 6th Street  
Oak Creek, WI 53154  
414.764.3223 | 414.764.8679 fax  
sales@americanintl.com  
www.signaturefoldergluers.com

### AIM Mexico

Oficina en Querétaro, México  
+52 1 442 595 3439 (Inglés)  
+52 1 442 467 1334 (Español)  
sales@americanintl.com  
www.signaturefoldergluers.com