



Durability, Versatility, Affordability



SIG-PACK



FEATURES:

- Run speed up to 200,000 blanks per hour
- Convertible stock: solid board: 200-650 g/m²; straightline box type
- Fills outer box (shipping case) sizes max. 550(w) x 700(l) x 400(h) mm and min. 160(w) x 300(l) x 100(h) mm
- Fills inner box (folded carton) sizes max. 400(w) x 550(l) mm and min. 50(w) x 100(l) mm
- Compatible with most folder gluer brands.

SIGNATURE SIG-PACK

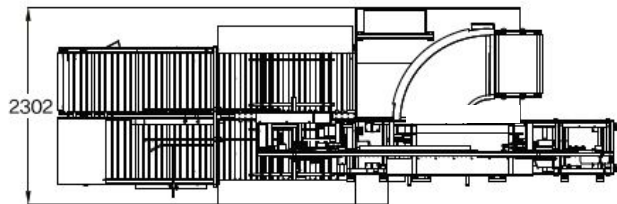
With the never-ending push for improved return on investment, the Signature line of converting technology provides a reliable and rapid payback.

Compatible Inline Supplementary Unit

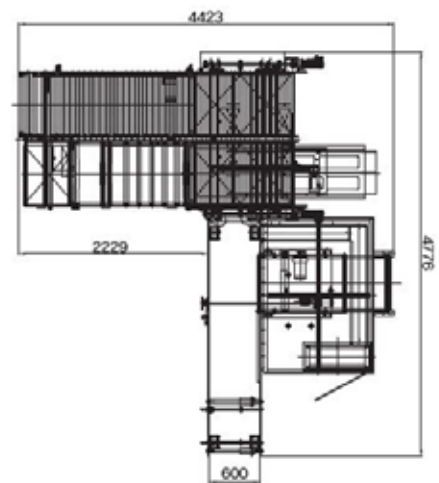
The Signature Sig-Pack carton packer is compatible with most folder gluer brands and is available for sale as an individual unit or as a supplemental option for a new Signature brand folder gluer. Designed for continuous operation at any speed, the Sig-Pack is known for accurate box counts, simple maintenance, operator friendliness and energy efficiency making it a productive and profitable solution for any converting operation.



Inline Configuration



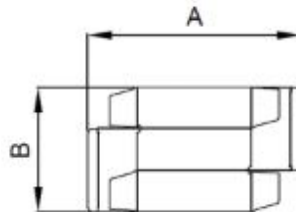
L-Shape Configuration



Measurements in millimeters (mm). Base model air requirements: 90 PSI. Base model power requirements: 380V / 3 phase / 60 amps. Based on configuration of specific machine, power and air requirements may change and additional transformers may be required. Contact your AIM representative to confirm.

CARTON SPECIFICATIONS

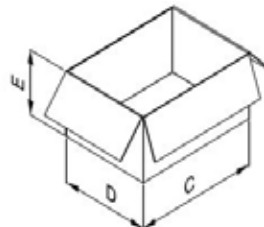
2 OR 4 CREASE LINE



A: 100-500 mm

B: 50-400 mm

CONTAINERS (with or without closing flaps)



C: 300-700 mm

D: 160-600 mm

E: 100-420 mm



AIM USA

7725 South 6th Street
Oak Creek, WI 53154
414.764.3223 | 414.764.8679 fax
sales@americanintl.com
www.signaturefoldergluers.com

AIM Mexico

Oficina en Querétaro, México
+52 1 442 595 3439 (Inglés)
+52 1 442 467 1334 (Español)
sales@americanintl.com
www.signaturefoldergluers.com