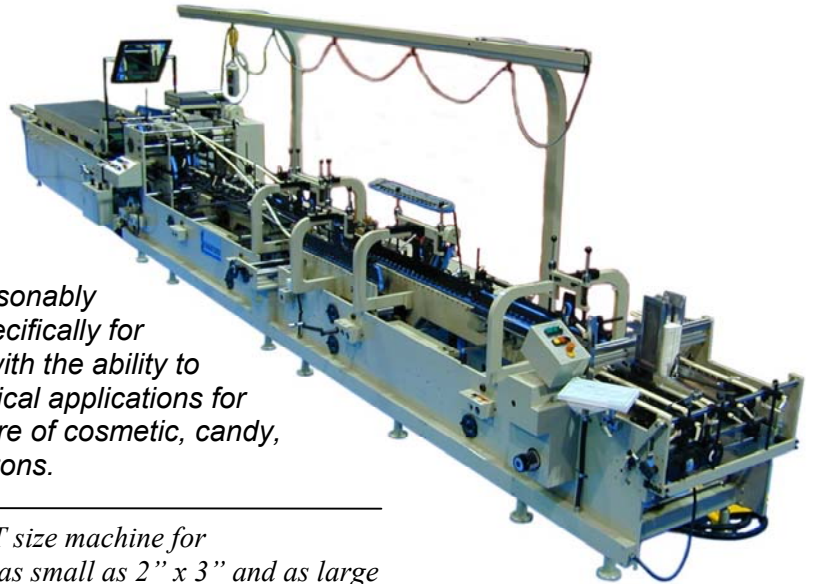


SIGNATURE

COMPACT 70, 90, & 110



The Signature™ COMPACT Series is a reasonably priced heavy-duty folder gluer designed specifically for all routine straight line/lockbottom shapes with the ability to prefold and glue very small panels. The typical applications for this flexible design would be the manufacture of cosmetic, candy, pharmaceutical, vending, and specialty cartons.



The PERFECT size machine for carton blanks as small as 2" x 3" and as large as 36" x 44".

TYPICAL CAPABILITIES

- Straight Line
- Crash Lockbottom
- Belt Speeds Up to 400 m/m
- Folding Box Board Down to 8 Point

TECHNICAL FEATURES



Easy to service dust tight control center

Precise speed regulation for all motions through easily programmable adjustable frequency (inverter) drives.

- Unique "out of feed" quickly adjustable folding attachments

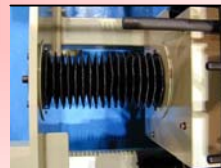


Exclusive heavy duty crank out lockbottom carrier unit



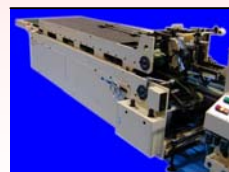
Easy to read/use touch screen control and production information center.

- Two way quick action upper carrier height adjustment clamps



High speed cross shaft bellows to minimize maintenance

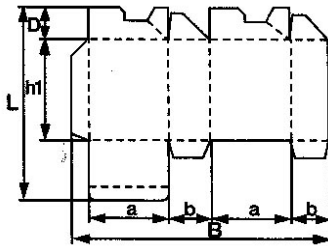
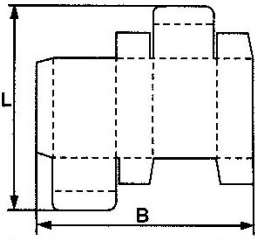
- Numerous safety devices such as multiple "E" stops, pinch point protection, pulley covers



Heavy duty Signature™ "Select" style compression section with pneumatic belt tracking

TECHNICAL DATA

		70	90	110
Straightline Cartons	B mm	80-700	80-900	80-1100
	L mm	50-800	50-900	50-900
	Belt Speed (m/min)	400	400	400
Lockbottom Cartons	B mm	150-675	160-875	160-1075
	L mm	120-800	150-900	150-900
	D max mm	120	150	150
	H1 min mm	65	65	65
	A min mm	40	40	40
	B min mm	30	30	30
	Folding Box Board (gm2)	Folding Cartons	200-800	200-800
	Lockbottom Cartons	250-800	250-800	250-800
	Collapsible Boxes	250-800	250-800	250-800
Corrugated Board	Folding Cartons	E/B flute	E/B flute	E/B flute
	Lockbottom Cartons	E/B flute	E/B flute	E/B flute
	Collapsible Boxes	E flute	E flute	E flute



OPTIONS

- Pocket folding system
- Coating milling (skiver) attachment
- Extended delivery table
- Most brands of gluing systems
- Detection and measurement systems
- Auxiliary compression belt assembly

